

# THE BLACK BELT OF CLADDING

Custom  
made in  
the UK



焼  
杉  
板



SHOU-SUGI-BAN®  
CHARRED TIMBER CLADDING

[www.shousugiban.co.uk](http://www.shousugiban.co.uk)



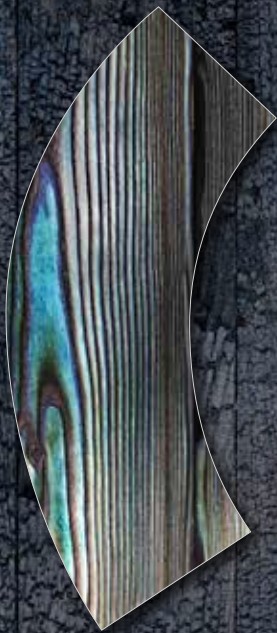


# What is Shou Sugi Ban®?

ShouSugiBan® is our art of manufacturing handmade timber products. We burn timber to provide a beautiful and tactile product which is a technique that we have a proven expertise to supply, design and install. The manufacturing process is detailed, accurate and dangerous; one that we have perfected... Shou Sugi Ban®.

## Yakisugi

This is the traditional technique which is used in Japan to char timber. Our technique, since 2005, offers a uniqueness to each individual project. There are many finishes and textures we can provide for interior and exterior projects. From the traditional highly burnt fragile looking to the sleek and contemporary finish; we provide all of them. We supply projects from a few sq. m to thousands.



# 焼杉板



ALAN TITCHMARSH LOVE YOUR HOME GARDEN



ALAN TITCHMARSH LOVE YOUR HOME GARDEN





CANARY WHARF

CANARY WHARF



EAST WEST ARCHITECTS



COALDROPS YARD



COALDROPS YARD



COALDROPS YARD



CANARY WHARF



TYERS GATE



HOTO CABINS



HOTO CABINS





LAKESIDE ROAD



RUSKIN STREET



ETON COLLEGE PAVILLION



WINNERS AVENUE



WOODWORKERS STUDIO



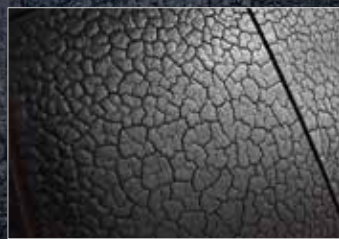
For much more info: [www.shousugiban.co.uk](http://www.shousugiban.co.uk)





# Charred timber cladding and materials palette

## Accoya®



Extreme Medite Tricoya Custom  
Made - Kitai - 期待



Anthracite Accoya® - Gen no  
- 暗い焼杉



New England Accoya® - Mizu  
- 山焼杉



Graphite Accoya® - Seizō - 製造



Charred Accoya® - Shōsai - 詳細



Light Brush Accoya® - Shizen  
- 自然



Heavy Brush Accoya® - Tenki - 天気



Accoya® - Sora - 空



Accoya® - Tobu - 飛ぶ



Accoya® (Soft brush) - Dorai  
- ドライ



Oak Charred - Honshu - 本州



Oak Wire Brushed - Hokkaido -  
北海道

## Oak

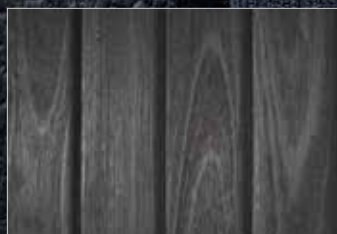
## Yūkari



Yūkari Kawa - 川



Yūkari Umi - 海



Yūkari Ogawa - 海



Yūkari Rifu - リーフ



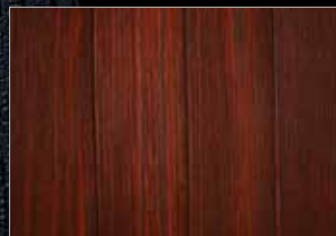
Yūkari Riru - プール



Yūkari Futtō - 沸騰



Yūkari Numachi - 沼地



Yūkari Kōsui - 降水

## Douglas Fir





# Charred timber cladding and materials palette

## Kebony



Kebony Timber Scots Charred - Kuril - 千島列島



Kebony Timber Scots Brushed - Kyushu - 九州



Kebony Timber Radiata Charred - Minami no - 南の



Kebony Timber Radiata Soft Brush - Tekusucha - テクスチャー



Kebony Timber Radiata - Kirro - 黄色



Kebony Timber Radiata Enhanced Grain - Hijō ni mirikiteki na - 非常に魅力的な



Kebony Timber Radiata Charred - Taketomi - 竹富島



Kebony Timber Scots Charred - Rishiri - 利尻島



Kebony Timber Scots Enhanced Grain - Legima - 伊江島



Kebony Timber Scots Charred - Kenchiku - 建築

### To view our products:

Showroom at the Sky House Design Centre,  
Raans Road, Amersham, Buckinghamshire, HP6 6JQ

Sales: +44 (0)1494 711 800

Showroom: +44 (0)1494 291 033

Email: [sales@exterior.supplies](mailto:sales@exterior.supplies)

Web: [www.exterior.supplies](http://www.exterior.supplies)



**SHOU-SUGI-BAN®**  
CHARRED TIMBER CLADDING

## Larch



Larch Charred - Takage - トカゲ



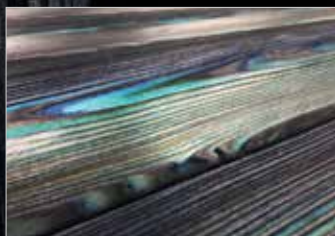
Larch Charred Light Brush - Koshikijima - 甑島



Larch Charred White - Byakko - 白虎



Larch Charred Heavy Brush - Shiberiatora - シベリアトラ



Larch Coloured - Karafurutaiga - カラフルタイガー



Larch Enhanced Grain Decking - Karamatsudekki - カラマツデッキ

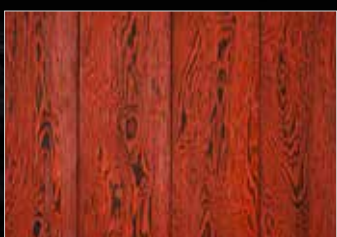


Larch Charred - Shikoku - 四国

## Douglas Fir



Mōbu - モーブ



Rōzu - ローズ



Shēdo - シェード



Orenji - オレンジ